

Plagiartwork [plagiɑ:rt'wɔrk]

“...is an artistic technique that involves the deliberate transformation of existing works and the procurement of materials found in a non-restorative or inanimate state.”

We often feel inspired to recycle and repurpose materials that we have previously purchased, lost, found, and encourage ourselves to “make the best of what’s around”.

We are convinced that it is in our collective interest to preserve, care, and also thoroughly enjoy what is present for not only our own well being but also for the sake of future generations.

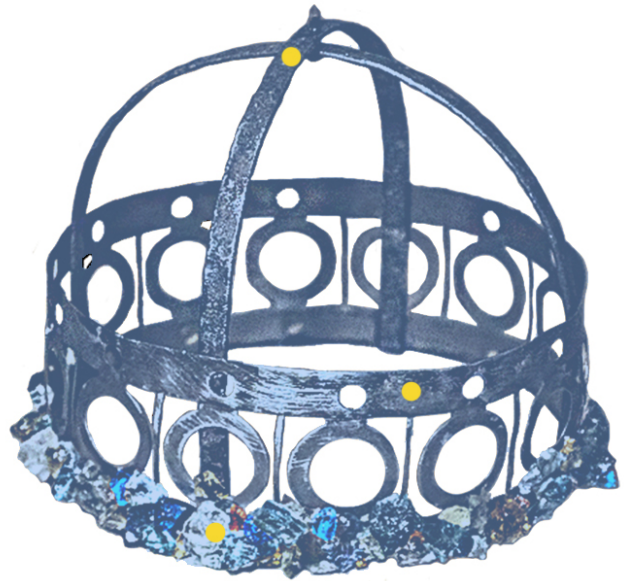
Our hope in echoing this belief through our artistry and the way we chose to create these conversation pieces, is that they ultimately will convey a message of global care and appreciation.

The title "Plagiartwork" for this specific technique was coined in 2015 during a conversation in Gothenburg between artist duo Angle & Dawn and a former acquaintance. When specified the technique resembles a family tree of artistry.

The Tree Crown...

... was created in collaboration between Angle & Dawn with inspiration, contributions and support from numerous sources (listed to the right). For all experience shared, wisdom passed on and help provided, we are eternally grateful.

The Tree Crown is currently not for sale, however may be put up for auction at another time.



How to specify “P L A G I A R T W O R K”

The Tree Crown by Angle & Dawn

1. Skeleton of lamp frame, **Fågloviks Glasbruk** 1950/1960
2. Iron rods found in the woods 2018
3. Broken glass, **Fågloviks Glasbruk** 1874 - 1980
4. Cleaned and assembled by **Angle & Dawn** 2019
5. Designed by **Dawn** 2019

